

FY20-21 Annual Report

MERCER COUNTY HEALTH DEPARTMENT

December 1, 2019 - November 30, 2021



Public Health

Prevent. Promote. Protect.

305 NW Seventh St.

Aledo, IL 61231

Monday - Thursday

8:00 am - 5:00 pm or by
appointment

Phone: (309) 582-3759

Fax: (309) 582-3793

dph.pmercer@illinois.gov

www.mchdil.com

Mercer County Board of Health

The Mercer County Board of Health meets the third Thursday of each month at 7:30 pm at the Mercer County Health Department.

Officers:

Larry Rhodenbaugh President
Dr. Crystal Simpson, D.D.S. Vice President
Elaine Wheeler Secretary

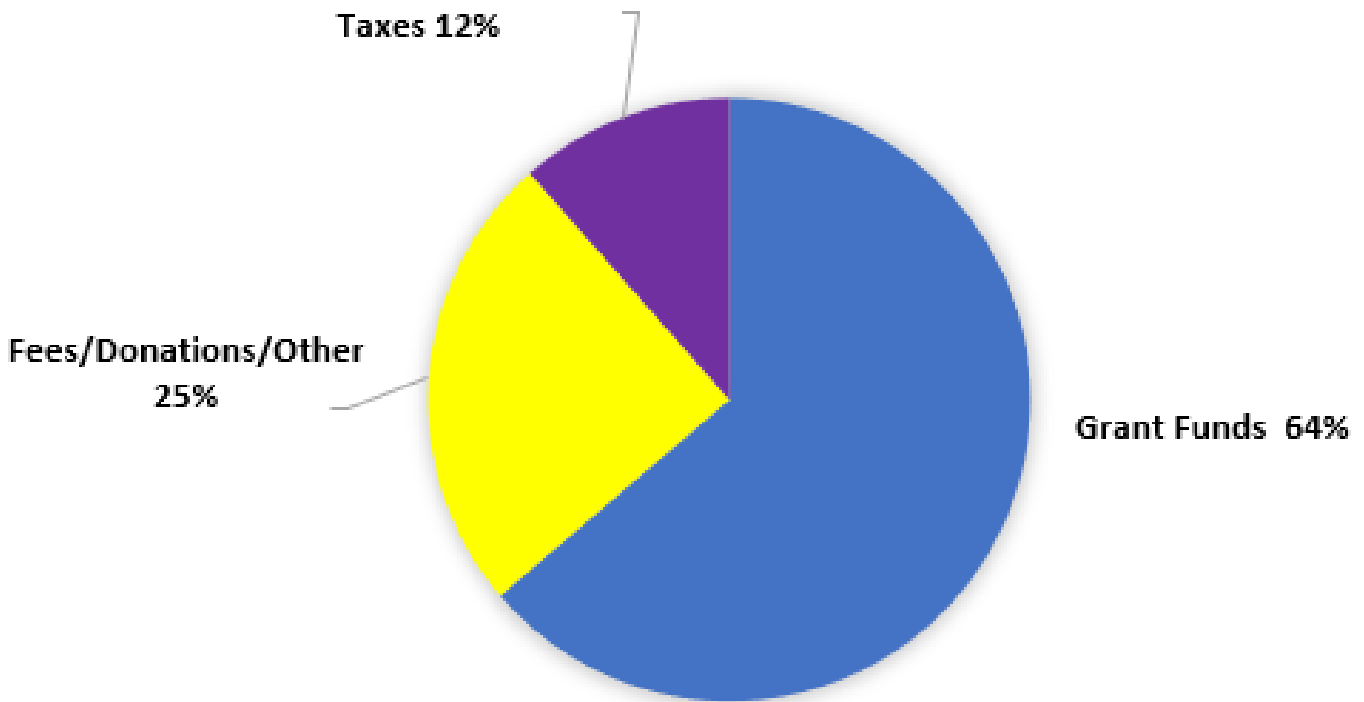
Members at Large:

Randy Anderson
Gary Anderson, County Board member
Dennis Palmer, D.O.
Myron Higgins
Buck Rind, County Board member
Tim Arbet, O.D., County Board member
Linda Koepke, County Board member

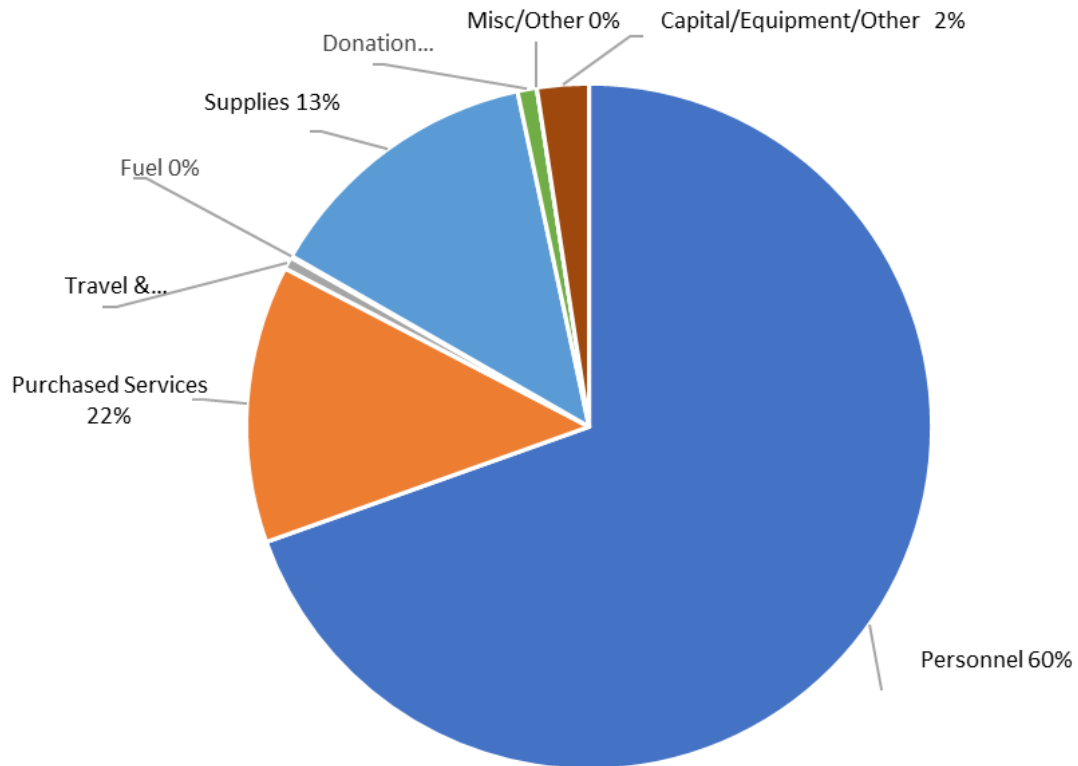


Public Health
Prevent. Promote. Protect.

REVENUES



FY19 Expenses



Mercer County Health Department Operating Summary Year Ending November 30, 2020 (Unaudited)

REVENUE:

Property Taxes	\$147,300.44
Permits & Licenses	
State & Federal Grants & Reimbursements	\$881,860.66
Fees, Donations, Contracts & Other Reimbursements	\$204,707.85
TOTAL REVENUE	\$1,233,868.95

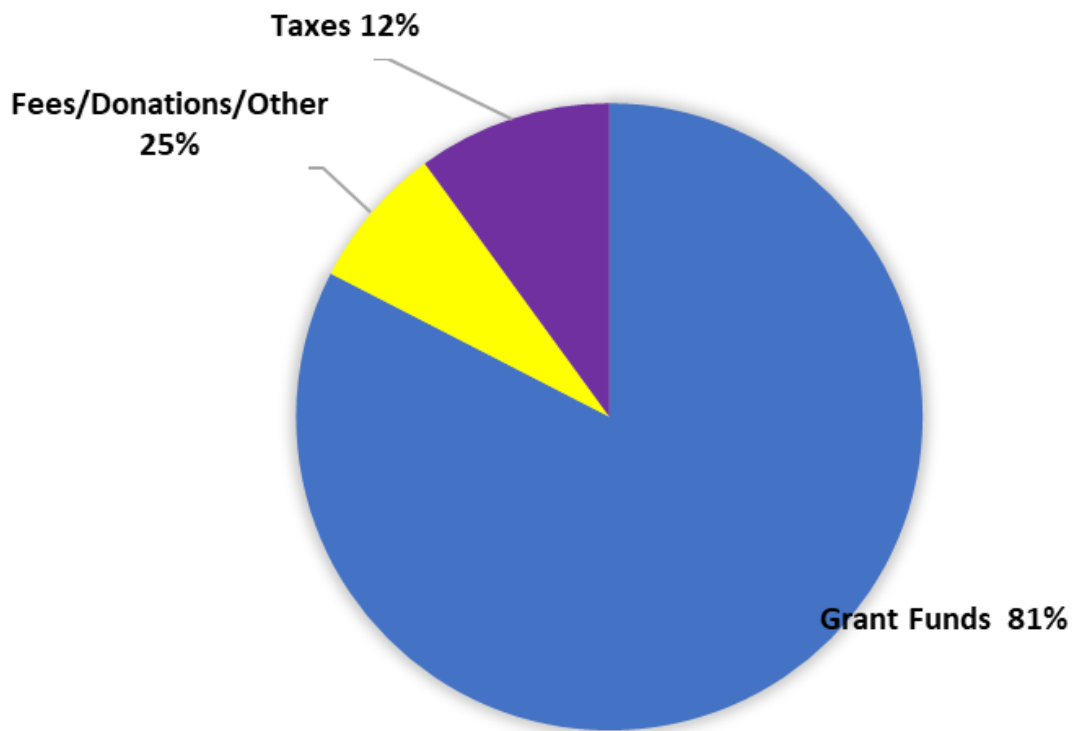
EXPENDITURES:

Personnel Wages & Benefits	\$884,057.80
Purchased Services	\$166,385.30
Travel & Education	\$7,309.36
Fuel	\$998.86
Supplies	\$169,782.10
Capital/Equipment/Principal	\$31,053.33
Donation Expense (MHAP)	\$11,541.70
Misc./Other Expenses	\$72.37
TOTAL EXPENDITURES	\$1,271,200.82

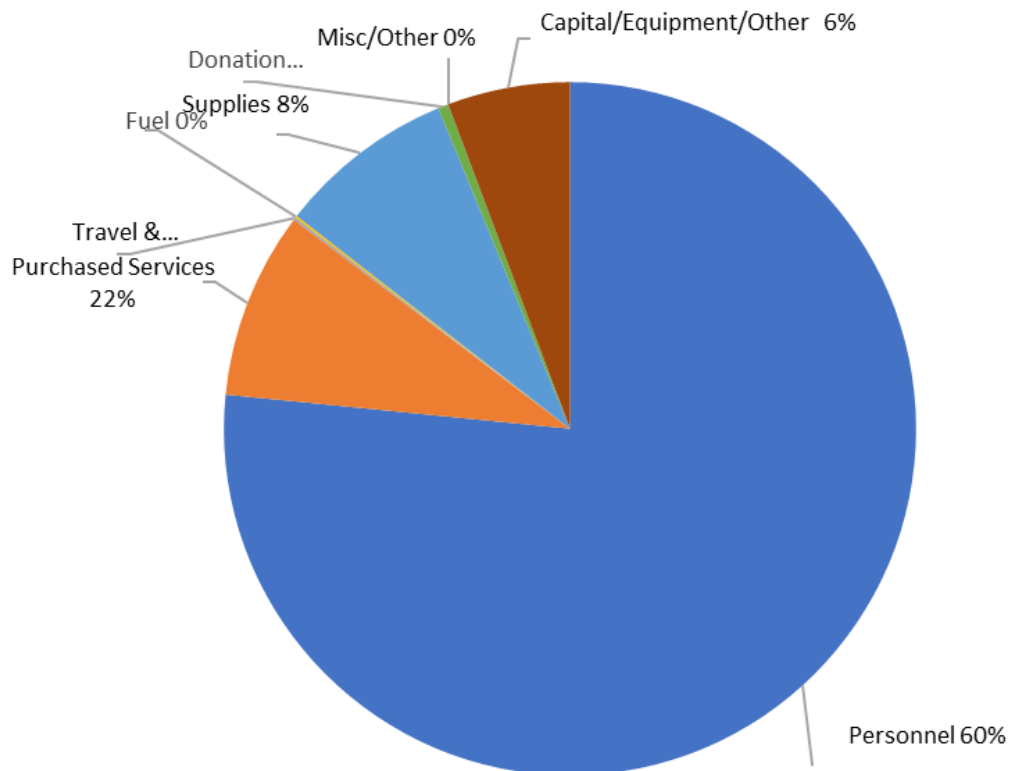
OTHER FINANCIAL USES:

Excess <deficiency> of revenue over Expenditures	\$-37,330.88
---	--------------

FY21 REVENUES



FY21 Expenses



Mercer County Health Department Operating Summary Year Ending November 30, 2021 (Unaudited)

REVENUE:

Property Taxes	\$154,263.26
Permits & Licenses	\$35,875.00
State & Federal Grants & Reimbursements	\$1,269,953.58
Fees, Donations, Contracts & Other Reimbursements	\$114,186.90
TOTAL REVENUE	\$1,574,278.74

EXPENDITURES:

Personnel Wages & Benefits	\$1,072,509.24
Purchased Services	\$122,257.99
Travel & Education	\$1,696.78
Fuel	\$1,336.16
Supplies	\$115,891.85
Capital/Equipment/Principal	\$87,002.10
TOTAL EXPENDITURES	\$1,400,694.12

OTHER FINANCIAL USES:

Excess <deficiency> of revenue over Expenditures	\$173,584.62
---	--------------

FULL-TIME STAFF

Angie Litterst, BS	Director of EMA/PHEP
Annette Doonan	Contact Tracer/Case Investigator
Barb Bryant, MS Ed	Contact Tracer/Case Investigator
Carla Ewing, BA	Administrator
Christina Monson	WIC/FCM/Imm Secretary
Diana Eggen	Business Office Coordinator
Hannah Garrett, CHES	Public Health Educator
Jennifer Hamerlinck, RN.....	Supervisor of Health Promotion, Director of MHAP
Jesse Hoffeditz, BS	School-Base Case Manager
Katie Hook, RN, BSN.....	Public Health Nurse
Krissy Dixon, RN	MHAP Nurse Navigator
Kyle Lloyd, MS, LEHP	Director of Environmental Services
Mari McCarty	MHAP Secretary
Megan Bull, BS	Case Manager, MHAP
Megan Koresko, RN, BSN	WIC Coordinator
Mindy McManus	MHAP Care Coordinator
Peggy Kaufman, LPN	Public Health Nurse
Tina Matlick	Program Coordinator
Tori McCullough	Contact Tracer/Case Investigator
Wendy Bigham, RN	Supervisor, Maternal Child Health; CD Coordinator

PART-TIME STAFF

Carol Winbigler	Contact Tracing
Diana Dunn	Housekeeping
Drue Griffin	Contact Tracing
Felicia Bonyngre	Breastfeeding Peer Counselor
Hannah Lingle	Contact Tracing
Jim Sharp	Maintenance
Sheila Brown	Contact Tracing

Lead Screening & Prevention Program

Lead screenings are done on children age 1 and 2 in the office for WIC, along with those pregnant on WIC and those who schedule for an appointment. Due to COVID-19 protocols and doing a large portion of our WIC appointments on the phone, our lead numbers were less than 50. CDC guidelines now recommend children with a capillary blood level greater than 5 ug/Dl have a venous blood level drawn. Home visits are also done in compliance with the guidelines for the lead program through the IL Dept of Public Health with some adjustments due to COVID-19. MCHD will continue to provide information to the public about sources of lead and provide education to contractors when conducting lead abatement projects. For many daycares and preschools, a lead screening is required which we can perform and bill insurance for.

Genetics Program

The Genetics Education and Follow-Up Services Program provides case finding, education and referral services to newborns, children, adults and their families who are in need of genetic services. This includes those infants found to be suspect or confirmed with a condition identified through newborn screening.

Maternal Child Health Family Case Management Program

The Family Case Management Program serves all pregnant women, infants, and children who meet eligibility requirements and agree to services. This program assists new mothers and families by providing information and assistance with receiving services vital to family health and safety.

Foreign Travel Program

Mercer County Health Department provides residents with information on required and recommended immunizations for traveling outside of the United States. Many of the immunizations can be given at the health department although some may need to be referred to foreign travel clinics for vaccines such as typhoid and yellow fever. Residents are given information about precautions they can take to avoid disease and illnesses so they may have a more enjoyable trip. Residents are urged to call as soon as they know their itinerary to ensure that they are fully immunized before departing. Consultation is free of charge.

Tanning Program

Mercer County Health Department inspects tanning facilities to insure proper health; sanitation and safety guidelines are followed.

	FY20
Tanning Facilities Inspections	1
	FY21
Tanning Facilities Inspections	1

Tuberculosis Program

MCHD offers the following services for tuberculosis prevention and treatment: TB Skin Testing. Follow-up on Positive Skin Tests, education and treatment.

Food Service Program

MCHD inspects for health and safety: restaurants, convenience stores, grocery stores, etc. (any establishment selling prepackaged or preparing and serving food to the public). Educational services on food preparation and proper sanitation techniques are available. Food Safety information is provided monthly in the local newspaper as an outreach service. MCHD works closely with local schools to provide educational materials focusing on the importance of handwashing and prevention of cross-contamination.

	FY20
Food Service Licenses Issued	74
Food Service Inspections	115
Temporary Food Licenses Issued	0
Food Complaints Investigated	2
Pre-operational	2

	FY21
Food Service Licenses Issued	76
Food Service Inspections	120
Temporary Food Licenses Issued	75
Food Complaints Investigated	2
Pre-operational	2

Communicable Disease Program

There are more than 70 reportable diseases or conditions in the State of Illinois. The CD program conducts communicable disease surveillance, investigation, prevention and reporting of infectious diseases as mandated by Illinois State Law.

Office of Emergency Management

This office oversees the four programs listed above and functions as one Emergency Management office striving to make Mercer County as prepared as possible for all hazards.

Activities include working closely with area responders and emergency partners to develop incident action plans (IAPs) prior to community events that increase the level of preparedness for emergencies that may arise. Support is requested from the National Weather Service who will then provide individual warnings for threatening weather. The event is also listed on the state's emergency dashboard to provide awareness to emergency planners outside our jurisdiction. Recent IAPs have been prepared for parades, protests, fairs, and festivals.

Emergency event planning has been extensive and ongoing during COVID for repeated large-scale vaccination and testing efforts. These services are offered several times a week out of the health department building and there have also been several events held off site at area schools, long term care facilities, businesses, churches, and our jail. In less than a year, MCHD has provided 149 separate vaccination clinics and conducted testing on over 138 different days. Each of these events requires planning for public awareness of the event, staffing, resource and supplies, clean up, inventory management, reporting, etc.

Emergency resources from regional and state agencies are requested, received, and distributed by this office. Again, the ongoing pandemic has made this a huge undertaking. At this time, more than 60,000 items (including gowns, gloves, masks, sanitizer, face shields, and more) have been distributed throughout the county in response to COVID.

Vision & Hearing Program

The vision and hearing program offered by MCHD provides vision and hearing screenings to preschool children in Mercer County. A certified vision technician screens children ages 3-5 years at preschool screenings in two (2) Mercer County school districts. Screenings are also provided at preschools in the area at HeadStart, Time for Tots, Tiger Tales, and the YMCA Preschool. Children who are unable to complete the initial screening are rescreened and, if necessary, are referred to a specialist for follow-up care. MCHD also screens children from age 6 months for vision using a special photo screener called the SPOT Vision Screener, a handheld portable device designed to help users quickly and easily detect vision issues on patients from 6 months through adult. It can also be used to help screen otherwise difficult patients. This screening can allow for earlier intervention, particularly in children with amblyopia (lazy eye). This machine is used in partnership with other agencies.

	FY20-21
Total Screened - for Vision	229
Total Screened - for Hearing	231

Teen Pregnancy Prevention

Teen Pregnancy Prevention, an evidenced based education in the classroom program, is provided to students at the Mercer County High School. The program conducted is Reducing the Risk and is primarily abstinence based. Students learn refusal skills, STD risk, disease information, and prevention strategies; pregnancy prevention techniques; and role play social situations. TPP also addresses youth development, decision making and self-esteem.

WIC: (Women, Infants & Children)

WIC is a special supplemental food program for Women, Infants and Children funded by the United States Department of Agriculture (USDA). WIC provides supplemental food voucher for income eligible, perinatal women and children up to age 5. WIC focuses on healthy eating and nutritional education for families. Families who participate in WIC also receive ongoing developmental and physical assessments, immunization tracking, administration breastfeeding counseling, and referrals to early intervention services, family case management and lead and hemoglobin screenings.

	FY21
Total Participants Certified	200

Breastfeeding Peer Counseling

In keeping with USDA's goal for nutrition, the breastfeeding peer counselor program was established. Mercer County was an early advocate of breastfeeding and began its peer counselor program over 14 years ago. The PC program educates perinatal women, their families and the community to the benefits of breastfeeding and provides ongoing support throughout the breastfeeding period for moms and infants. Our PC works a total of 14 hrs/week with majority of these hours being done remotely due to COVID-19 protocols. The BFPC also can do home visits, office visits, and makes telephone contacts. We continue to strive to maintain and exceed these breastfeeding goals to provide caring support for the mothers and babies of Mercer County.

Immunization Program

MCHD offers immunization services on Wednesdays by appointment. Immunization services are provided for infants, children and adults in need. We continue to work with parents, doctors, schools and the Illinois Department of Public Health in Springfield to assure children are given the proper immunizations at the appropriate age. The Mercer County Health Department and Genesis Health Group collaborate every year to provide physicals and immunizations onsite at the Mercer schools. The school clinics make it convenient for students and their parents to complete physical and immunization requirements for the following year. Adult Hepatitis B clinics have also been offered on site to organizations who may be at higher risk of disease such as local fire and police departments.

BE WISE - IMMUNIZE

High Risk Infant Care

Infants and children (ages 0-2 years old) are referred to the high risk infant follow up program either through the IDPH Adverse Pregnancy Outcomes Reporting System (APORS) or based on assessments done in the Family Case Management program which determine: that the infant has been diagnosed with a serious medical condition after newborn discharge; when maternal alcohol or drug addiction has been diagnosed; or when child abuse or neglect has been indicated based on investigation by the Illinois Department of Children and Family Services. The case manager helps link families to pediatric primary care including well child, immunization and specialty visits. Case manager provides referrals to appropriate community resources based on family needs. She works with the parents to educate them about their child's condition and provides regular developmental screenings to make sure child is meeting age appropriate milestones.

Tobacco Grant - Smoke Free Illinois Act

Mercer County Tobacco Program is also responsible for the enforcement of Smoke-Free Illinois Act. Public places are checked for signage and receptacle compliance and the program is also responsible for checking complaints for violation. The program promotes events that highlight SFIA; prevention in schools related to tobacco, juuls, and e-cigarette use; and celebrates Take Down Tobacco Day of Action. MCHD conducts compliance visits on 340 or more businesses and food establishments throughout the county annually.

Tobacco Enforcement Program

Tobacco Program Coordinator, local law enforcement, and special agent(teenager) conduct county wide compliance checks through the Tobacco Enforcement Program at all tobacco retail locations 3 times annually throughout the county.

Environmental Health

Mercer County Health Department (MCHD) is the local agency responsible for the required licensure for septics, private water wells and food establishments. Educational services are available.

Loving Bottoms Diaper Program

In April of 2019 Mercer County Health Department partnered with Loving Bottoms Diaper Bank in Galesburg, IL. Loving Bottoms Diaper Bank provides diapers, pullups, feminine products, and adult diapers free of charge for those in need. In 2021, we distributed over 6,600 diapers and 11 period kits. These products were given to not only WIC clients, but other families in need in the community. Clients are eligible every 30 days.

Private Sewage

MCHD issues required permits and inspects all new and renovated septic systems within the county. Sewer and water inspections for bank loans are completed upon request.

	FY20
Private Sewage Permits Issued	36
Septic Inspections Completed	36
Bank Loan Inspections	9
Contractors Registered in County	12 Installers 7 Pumpers

	FY21
Private Sewage Permits Issued	36
Septic Inspections Completed	36
Bank Loan Inspections	9
Contractors Registered in County	12 Installers 7 Pumpers

Water Well Program

MCHD provides water sampling for wells with the county. We approve, issue required permits, inspect, and sample new wells. Water sample bottles are available to the public for a fee. MCHD approves the required plans for sealing abandoned wells located in Mercer County. Non-Community wells are also monitored quarterly or annually depending on classification.

	FY20
Water Well Permits Issued	16
Water Wells Inspected	16
Water Samples Collected	52
Abandoned Wells Sealed	3

	FY21
Water Well Permits Issued	18
Water Wells Inspected	18
Water Samples Collected	58
Abandoned Wells Sealed	3

Public Health Emergency Preparedness

The Public Health Emergency Preparedness (PHEP) program plans for all hazards, including: receipt and distribution of the Strategic National Stockpile of Pharmaceuticals, emergency response for natural disasters, infectious disease pandemics, terrorism, bioterrorism, communication strategies, volunteer management, shelter management, NIMS compliance, and training and exercise development for disasters. Activities include quarterly call down drills with health department staff as well as community partners and completion of appropriate training opportunities and NIMS courses. At least one exercise is held every year which partners with community emergency response agencies and tests emergency plans in place to identify strengths and areas of improvement.

Emergency Management Agency

The Mercer County Emergency Management Agency continues to work on prevention, mitigation, preparedness, response, and recovery activities in the county with a focus on natural disasters, chemical emergencies, and epidemics. Mercer County remains active as a STORM READY community, working closely with the National Weather Service. Bi-annual updates are completed for state approval to the Mercer County Emergency Operations Plan. The most recent plan update was approved by the Illinois Emergency Management Agency on March 15th, 2021. Additional updates and plan maintenance are ongoing to the Disaster Recovery Plan, Hazard Mitigation Plan, Communications Plan, Training and Exercise Plan, and Shelter Plan. Partnership continues with Mercer County Medical Reserve Corps for volunteer recruitment, retention, and training. This program also conducts several training and exercise events annually to enhance preparedness and resiliency county-wide.

Mercer County Medical Reserve Corps

Medical Reserve Corps is a national network of local groups of volunteers engaging local communities to strengthen public health, reduce vulnerability, build resilience, and improve preparedness, response and recovery capabilities” (www.medicalreservecorps.gov). Mercer County MRC is comprised of medical and non-medical volunteers. Volunteers are able to stay engaged throughout the year in a variety of ways; Incident Command System trainings, miscellaneous emergency and disaster trainings, community events, exercises, and other non-emergency events. Several volunteers serve on the Mercer County Local Emergency Planning Committee to enhance planning for chemical transportation emergencies. Others are serving through the Mental Health Action Program assisting the program’s Food Mission and/or conducting spiritual counselling as part of the Spiritual Care Team. Volunteers stand ready for activation for emergency events. Each member is provided an ID badge and t-shirt. Mercer County Medical Reserve Corps is always seeking new applicants looking to serve the community.

Once the COVID response began including testing and vaccination, MRC volunteers became crucial workforce additions during intensely busy times both on site at the Health Department as well as while working off-site and in the schools. In addition to the 62 volunteers that were already on the roster, another 40 individuals joined the Corps since March of 2021. Over 10 trainings have been held on how to conduct COVID testing and vaccine administration.

Hazard Materials Emergency Preparedness

Hazardous Materials Emergency Preparedness focuses on building LEPC membership, planning and training on chemical emergencies and transportation concerns. Extensive work has been invested in building an active LEPC membership committed to planning and education related to chemical safety and emergencies. Annual anhydrous trainings are a key focus. LEPC meets quarterly with consistent support and membership from up to 20 partners.

Well Woman Grants

The Women's Wellness Planning Grant was implemented in 2020 to address reducing barriers to well woman prevention visits, screenings, counseling, and immunizations. These visits play a critical role in diagnosing and managing disease, chronic disease, and mental health conditions for the target group of women age 18-44 years. The grant allowed us to create a stakeholder list, conduct a needs survey, create a resource directory of women's health and screening providers, promote women's health through medic and social media, create and distribute a women's wellness brochure, and assist community members to access women's wellness care and reduce barriers to service such as transportation, insurance, and food insecurity. In 2021 MCHD received funding for the implementation phase of 'Increasing Well-Woman Visits' and will begin a navigation/case management approach utilizing the evidence-based 'Patient Navigation Toolkit' from Boston Medical Center. This approach will focus on reducing barriers to care and establishing wrap-around services to meet the needs for women's wellness in the county.

Fecal Immunochemical Testing (FIT)

FIT screening is a non-invasive screening for colorectal cancer. The clients are able to do to the kit at their own home and then bring it in for testing. We received the FluFIT grant in October and the program is in the beginning phases. At this time we have not completed any this year, but received 100 kits through our grant to service Mercer County resident.

West Nile Virus Prevention and Surveillance

The goal of the project is to educate about West Nile Virus and Encephalitis prevention, detection and treatment. This program is designed to track progression of the virus within the community and enhances existing interventions regarding WNV community education, and community surveillance. In addition, surveillance and testing of both mosquitoes and birds for West Nile Virus from vulnerable areas was conducted. Tick kits and education were created and disseminated to the public. Information was distributed throughout the county, including the MCHD booth at the Mercer County Fair. A public informational tri-fold poster set was displayed throughout the season. In 2020 and 2021, several mosquito batches tested positive for WNV. There were 50+ mosquito batches collected each year. No birds collected tested positive during 2020 or 2021. In 2020 there was a positive case of WNV in a horse.

Heart Smart for Teens

Heart Smart for Teens was presented to 5th and 6th grade girls at Mercer County Intermediate Schools serving over 100 students. Education focuses on physical activity, health eating, and positive self-image. Students are provided a healthy snack and the opportunity to engage in a physical activity aimed at heart health. Due to COVID-19, the program was completed with education on social media platforms. Education addressed topics of MyPlate, Exercise in Moderation, Setting Personal Goals, Osteoporosis, Heart Truths, Reading Food Labels, and Activity Tracking.

Mental Health Action Program

In 2018, Mercer County Health Department was awarded a federal grant through HRSA to implement a mental health nurse navigator program based on an evidenced-based model from Boston Medical Center. This program provides navigation and case management services to community members with a mental health diagnosis and barriers to care such as lack of transportation, lack of insurance, housing or food insecurities, and those without an established mental health provider for counseling and medication management. Through a wrap-around approach to services, MHAP has been able to provide mental health services including nurse navigation and case management to over 600 residents in the county in the first four years, on-site substance counseling, on-site and in-school anger management, on-site insurance counseling, counseling at Genesis Health Group and at local schools, and advanced practice psychiatric nurse care at Genesis Health Group. MHAP conducts an emergency food pantry program. The program has recently expanded into medication management and a home visiting strategy.

Dental Program

Due to the COVID-19 pandemic, all in school dental programs were suspended for FY2020 /FY2021 as the school districts were largely in remote learning. As dental practices re-opened, we continued to rebuild our program. We had received a Delta Dental grant that allowed us to purchase a mobile dental operatory that will allow us to access school districts during their entire school year instead of late spring and early fall only. Additionally, we submitted a grant application to the Illinois Children's Healthcare Foundation and Delta Dental to create a robust dental program plan for those most at risk in our schools – those underinsured and non-insured for dental services. We were notified in late November 2021 that we had received the grant and look forward to the opportunity to work with area partners to create a sustainable dental program within the Mercer County community.

Emergency Food Pantry

In partnership with the Loving Hands Food Ministry and the United Methodist Church Aledo and Riverbend Food Bank, MCHD/MHAP conducts an emergency food pantry program to meet the needs of food insecurity in the county. This program has been widely and successfully implemented to fill the gaps in food accessibility for those with financial challenges and those impacted by the pandemic. Food is provided in the form of 'power packs' which include ingredients to make meals, frozen casseroles, sandwiches, and miscellaneous fresh and non-perishable food and personal items. Home delivery is an option for those without transportation of any kind. The program is currently in the process of renovating the pantry area to accommodate a full kitchen and a potential meal site.

COVID-19 Testing/Contact Tracing Program

The Contact Tracing/Case Investigating team continues to contact and monitor Mercer County COVID-19 positive cases and their close contacts. This team also works closely with Mercer County School District and Sherrard School District with their cases and contact tracing. The summer months of 2021 proved to be a very good time for cases as the case numbers were down, but as September came and school started, our cases started to climb and have not slowed down since. Our case numbers for FY20-21 are listed below. This does not include close contacts.

2020/2021/2022 – Mercer County COVID-19 Cases Per Month with Age Breakdowns; Deaths Per Month					
Mercer County, IL COVID-19 Cases	Under age 18	Age 18-64	Age 65 and older	Total Cases	Deaths
January 2020					
February 2020					
March 2020					
(First month with documented cases) - April 2020	0	7	1	8	0
May 2020	0	8	1	9	0
June 2020	0	2	1	3	0
July 2020	1	28	18	47	2
August 2020	6	28	5	39	3
September 2020	2	35	9	46	1
October 2020	20	124	44	188	2
HIGHEST MONTH FOR CASES - November 2020	60	296	81	437	5
2nd HIGHEST MONTH FOR CASES - December 2020	40	215	57	312	14
January 2021	14	98	25	137	5
February 2021	12	46	14	72	2
March 2021	8	32	2	42	1
April 2021	29	65	11	105	0
May 2021	9	44	12	65	1
June 2021	1	10	1	12	0
July 2021	5	18	3	26	0
August 2021	73	109	17	199	0
3rd HIGHEST MONTH FOR CASES - September 2021	68	139	36	243	2
October 2021	19	84	21	124	6
November 2021	101	109	12	222	1
December 2021	**	**	**	0	
Totals:	468	1497	371	2336	45
** As of 11:15 pm on 12/20, there are 308 cases for the month.					